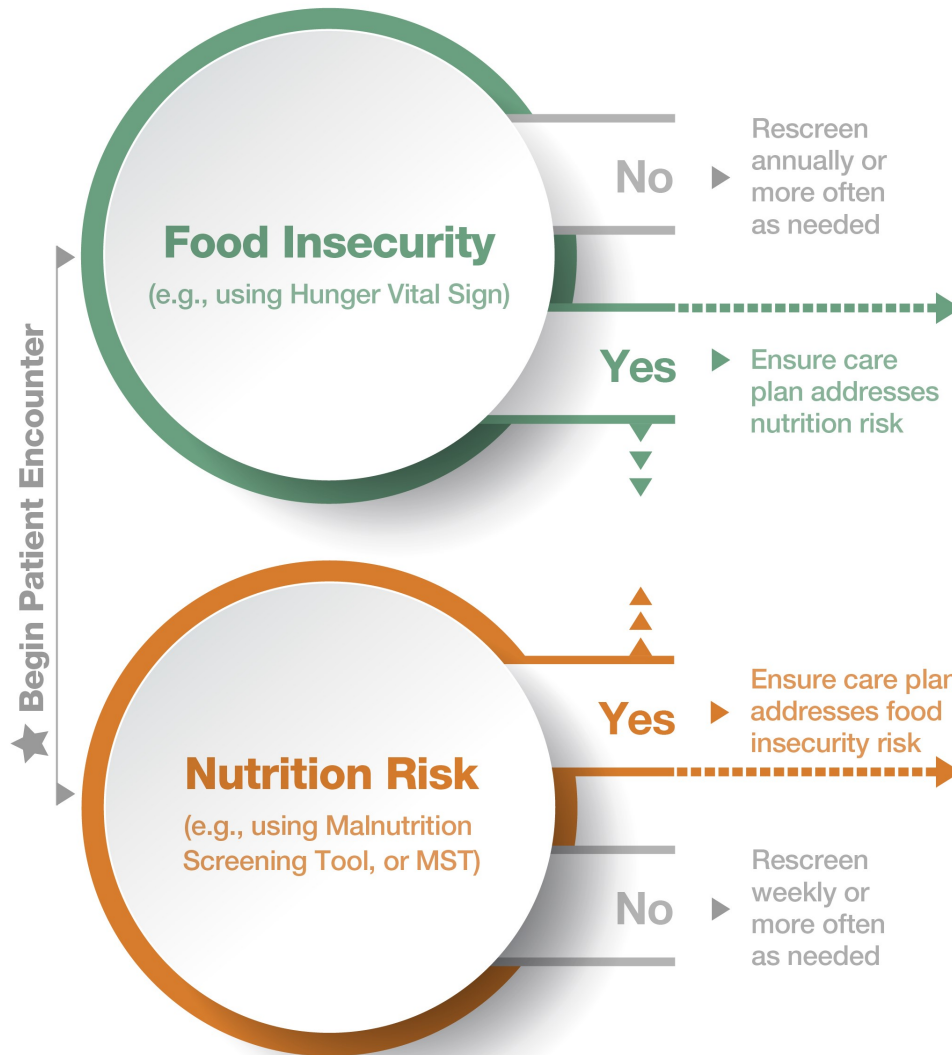


# Perform Screenings for Food Insecurity & Nutrition Risk

# Connect to Patient Resources, Clinical & Community Services\*



<p><b>Food Insecure</b> +</p> <ul style="list-style-type: none"> <li>• Coordination of care by RDN, including nutrition risk assessment</li> <li>• Referrals to local and federal food programs and resources</li> </ul>
<p><b>Nutrition Risk</b> +</p> <ul style="list-style-type: none"> <li>• Referral to RDN for nutrition assessment, specialized care planning, education, and coordination with staff</li> <li>• Referral to medically tailored meal programs, provision of oral nutrition supplements, and/or connection to other tailored programs as needed</li> <li>• Provision of nutrition education</li> </ul>
<p><b>Food Insecure &amp; Nutrition Risk</b> ++</p> <ul style="list-style-type: none"> <li>• If + and +, consider interventions listed above</li> </ul>

\*See MQii Food Insecurity and Nutrition Risk Screening Resources page for corresponding list of resources.